



Ruger Industries, Inc.
10200 Wellman Road
Streetsboro, OH 44241
Phone: 330-656-1600
Fax: 330-656-1601
www.rugerindustries.com

AFFORDABLE

90 DEGREES

VERSATILE

SWINGBOOM

HP-18CJ

- **2000 lb. Capacity**
- **90 degree boom swing with load**

ACCESSORIES

- **Floor Lock**
- **Extension boom**
- **Plastic or Polyurethane wheels**
- **Power-Pak**



STANDARD FEATURES

- Meets Ruger's engineering standards of 150% structural overload of maximum rated capacity
- Double action hand pump for quicker and easier lift
- Built-in hydraulic overload relief valve (An original Ruger patent)
- Needle type release valve permits pin-point control over lowering and holding of heaviest or lightest loads
- Steel casters with roller bearing wheels
- Swivel hook with safety latch and chain to support heavy loads

Prices, Specifications, and Options are subject to Change Without Notice.

All Ruger products are shipped F.O.B. Streetsboro, Ohio 44241

FAX: 330-656-1601 E-mail: info@davidround.com

The retractable outrigger allows the crane boom to turn 90 degrees to either side. Tested and exceeds ANSI/ASME PALD standards. Meets ANSI Z.535

MD1001D3

AFFORDABLE



Ruger Industries, Inc.
 10200 Wellman Road
 Streetsboro, OH 44139
 Phone: 330-656-1600
 Fax: 330-656-1601
 www.rugerindustries.com

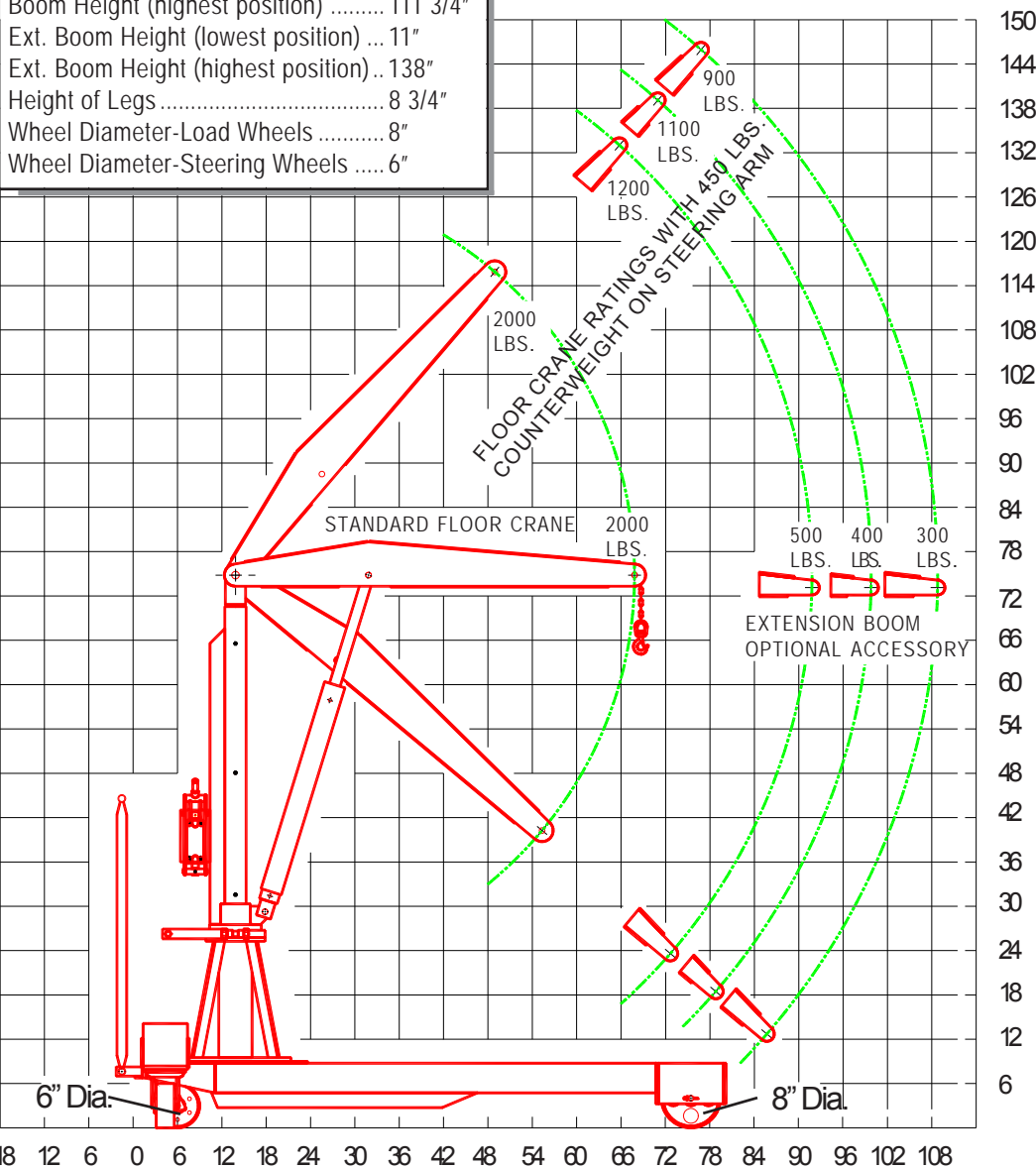
90 DE-
GREES

VERSATILE

SWING
BOOM

MODEL: HP-18CJ

Model	HP-18CJ
Max. Capacity	2000 lbs
Overall Base Length	79"
Overall Width	34 3/4"
Overall Height	75 3/4"
Width Between Legs	26 1/4"
Boom Reach Retracted	54"
Boom Reach Extended	95"
Boom Height (lowest position)	39 3/4"
Boom Height (highest position)	111 3/4"
Ext. Boom Height (lowest position) ...	11"
Ext. Boom Height (highest position) ..	138"
Height of Legs	8 3/4"
Wheel Diameter-Load Wheels	8"
Wheel Diameter-Steering Wheels	6"



NOTE:
 Ruger can modify
 any standard
 dimensions
 to meet specific
 customer needs.